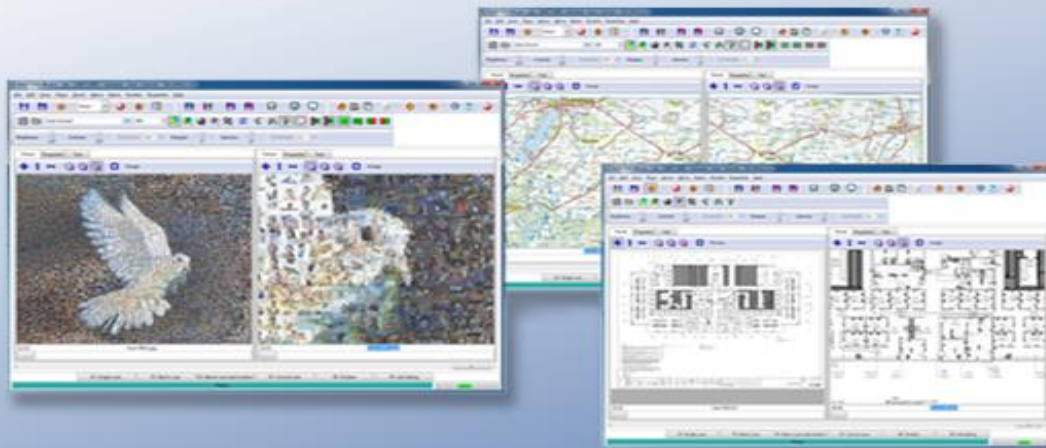




BatchScanWizard



Batch Scan Wizard – Software simplifies high volume scanning



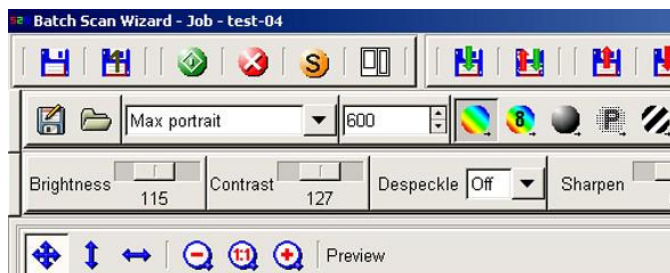
Batch Scan Wizard allows scanner operators to automate scanning large volumes of documents. The software expedites data throughput and reduces operational tasks substantially. A batch is started either using the foot switch or the user interface of the Batch Scan Wizard.

The operator can configure frequently used functions and operations on hotkeys and activate them with the single press of a key. Even complex operations can be configured for hotkeys.

Highlights

- Automated scanning of high volume source documents
- Easy configuration with templates
- Manage scan parameters in jobs
- On the fly modification of scanned images
- Hotkeys - frequently used operations at the press of a key
- Scan Tool - scan user definable sections of source documents
- Variable page splitting
- Time saving, high data throughput, perfect for production

In addition to standard scan parameters like brightness, contrast, color mode or file format; Batch Scan Wizard offers Scan Tool for predefining regions in a document to extract, scan and save as separate images. A previously scanned document can be modified and the resulting image quality improved without having to rescan.





BatchScanWizard



Batch Scan Wizard supports all **Scan2Net**[®] scanners and their functions. Using Batch Scan Wizard's rescan function, a previously scanned image is held in memory. Color mode, file format, rotation, mirror and camera settings can be modified without having to rescan. The new settings will affect the image immediately, without having to physically rescan the document. When you have optimized your scan parameters, you can save the new images or replace an image in your batch.

New Features in Version 5.0:

- Indexing scan jobs
- Create multipage PDF files
- Create multipage TIFF files
- New keyboard shortcuts, file menu and mouse context menus
- Integrated full-screen display
- New tools and features to configure templates
- Supports all functions in Scan2Net[®] version 5.80 and higher.

Batch Scan Wizard Functions:

- Create custom templates for specific scanning parameters, file naming conventions and directory locations.
- Automatic generation of file and directory names and directory structures using individual variables or combinations of variables.
- Freely configurable file, directory, and scan template names (via manual input, barcode or using variables).
- Configurable keyboard shortcuts to optimize processing speed.
- Supports all Scan2Net[®] functions as well as page splitting, page region extractions, zoom, rotate, invert and mirror.
- Interface allows operators to select a variable number of image windows.
- Individual image scaling horizontally, vertically or adapted to the window size.
- Cut, delete, replace and insert a selected image into a previously generated job.
- Multiprocessor and hyper threading support

The new, freely configurable workflow tracking in Batch Scan Wizard supports you with information about your files in each scanning job. This record includes date and time for each image scanned, the scanning parameters used, the PC used and the location of your images.

Batch Scan wizard scan job indexing will help with the compilation of individual variables and/or combinations of variables for the automatic creation of file and directory names and their directory structures.